

COLLINS TOWNSHIP

Each township has six files containing six sections in each, and one file containing all 36 sections.

Collins01to06.pdf

Collins07to12.pdf

Collins13to18.pdf

Collins19to24.pdf

Collins25to30.pdf

Collins31to36.pdf

CollinsAll36.pdf

The points are listed starting with the point above the SE corner and continuing in a counter-clockwise rotation around the section. This normally begins with the East point, Northeast, then North, but may also include Witness Corners, and/or Meander Corners.

Definitions

Witness Corner: A witness corner “stands in” when the true corner cannot be monumented or occupied because of difficult terrain or obstruction of the corner sight. The witness corner must be on the section line and is usually 5 or 10 chains away from the true corner.

Meander Corner: The intersection of a township, range, or section line and the banks of a navigable stream or meandering body of water.

CERTIFICATE OF LOCATION OF GOVERNMENT CORNER

East Quarter _____ Corner of Section 13, Township 115 N, Range 30 W, 5th P.M.

STATE OF MINNESOTA, County of McLeod

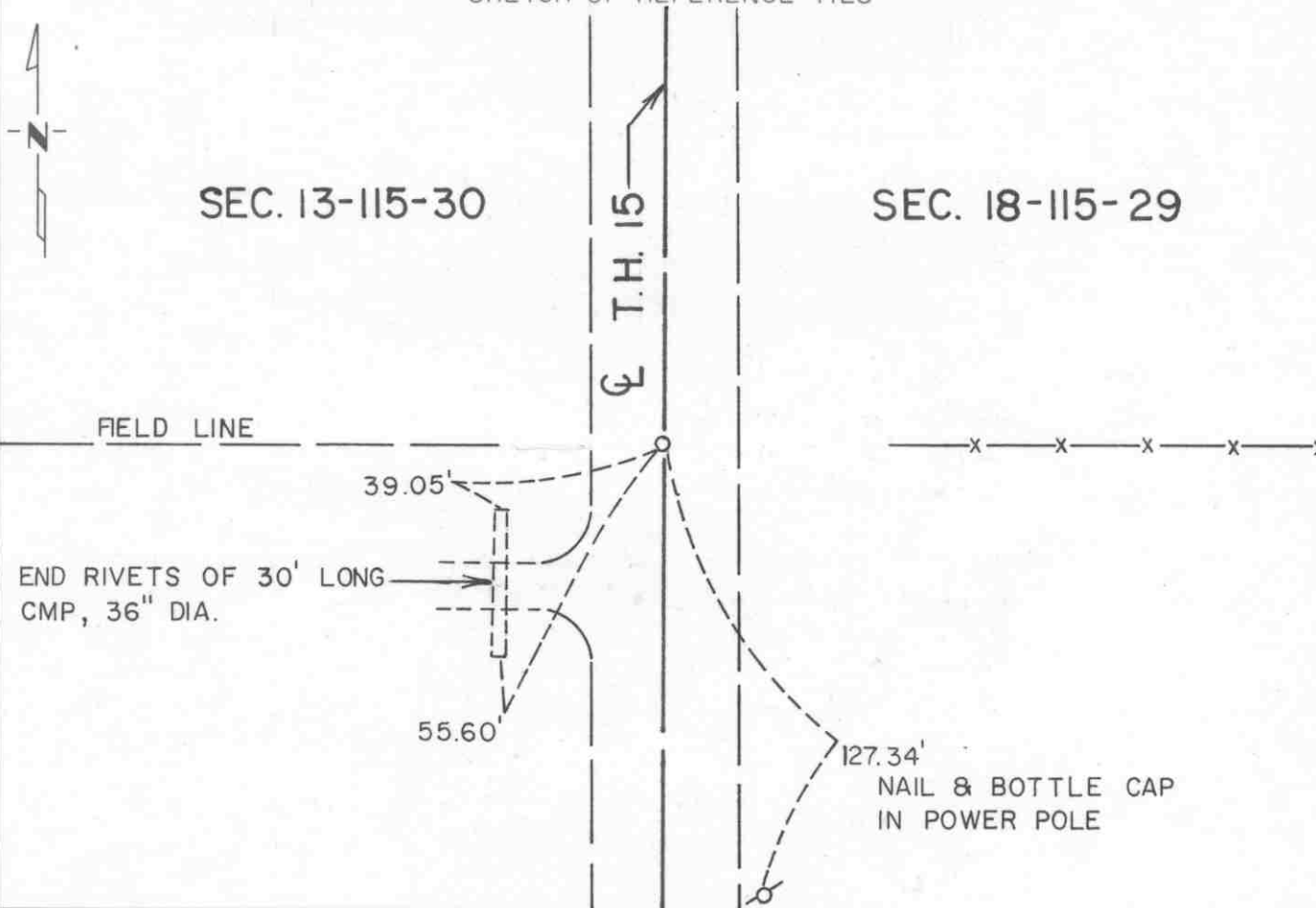
At the corner location shown on the sketch:

On Apr. 16, 1990 found a P.K. nail over a spike near the surface of the highway

left monument as found, lowered monument, removed monument (explain)

On _____ placed a _____

SKETCH OF REFERENCE TIES



Statement of evidence relative to this corner location is on back of page.

I hereby certify that this document and the data contained herein was prepared by me or under my direct supervision.

Robert Gans
SIGNATURE

8-19-91
DATE

Registration No. 11864

Land Surveyor, Professional Engineer

County Surveyor, County Engineer

OFFICE OF THE COUNTY RECORDER

County of McLeod

I hereby certify that this document was filed in the Co. Recorders office at 2 P .M. on the 18th day of Sep A.D., 1991

County Recorder Carmen Utell

By _____, Deputy

DOCUMENT NO. 241025

Statement of Evidence:

East Quarter Corner Section 13, T 115 N, R 30 W

- 1855 - The original Public Land Survey of the township line was completed by John Ryan. A wood post was set over a deposit of charcoal in a dirt mound to mark the corner. Trenches and pits were dug to build the mound. Osage orange was planted at the corners of the mound.
- 1896 - I. C. Christlieb, McLeod County Surveyor, set an iron monument to mark the corner.
- 1941 - The Minnesota Highway Department right of way map shows that a 1" by 2" iron pin was found at T.H. 15 P.O.T. 829+72.7.
- 1942 - All evidence of the corner was probably destroyed when T.H. 15 was graded.
- 1969 - Dickman Knutson, McLeod County Surveyor, set a spike at T.H. 15 P.O.T. 829+72.7. This location was in line with a field division to the west and a fence line to the east.
- 1989 - Willard Pellinen, McLeod County Surveyor, found the spike and set new reference ties.
- 1990 - R. C. Jones, Registered Land Surveyor with Mn/DOT, found the spike at the road surface.

The spike is accepted as the corner location because it is 0.06 feet west of T.H. 15 P.O.T. 829+71.25, which closely fits the position shown on the right of way map. Also, it is in line with a field division to the west and a fence line to the east.

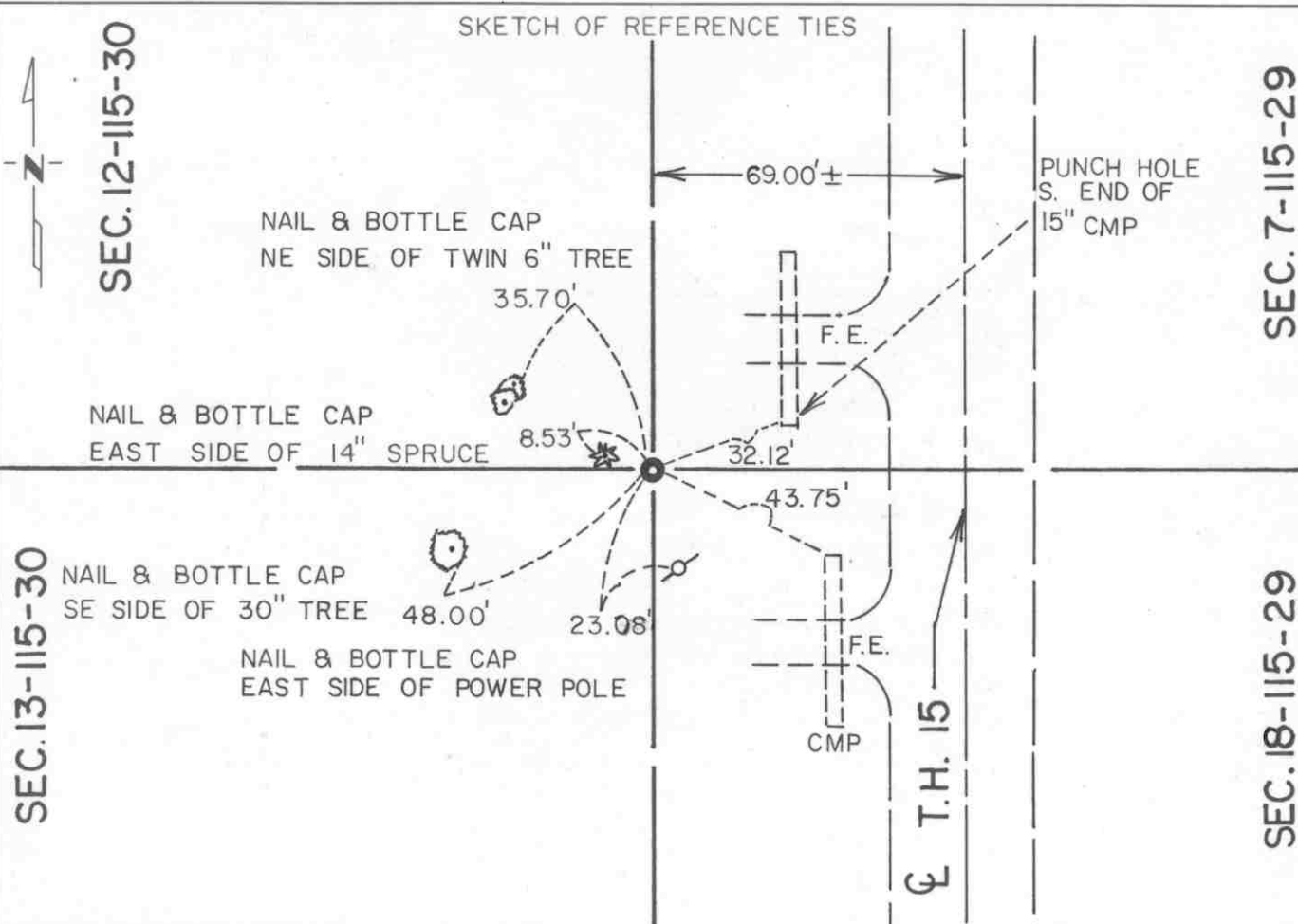
For additional information, contact the Mn/DOT Surveys Section at Willmar, Mn 56201.

CERTIFICATE OF LOCATION OF GOVERNMENT CORNER

Northeast Corner of Section 13, Township 115 N, Range 30 W, 5th P.M.
 STATE OF MINNESOTA, County of McLeod

At the corner location shown on the sketch:

- On Apr. 16, 1990 found a cast iron monument about 2" below ground surface
DATE
- left monument as found, lowered monument, removed monument (explain)
- On _____ placed a _____
DATE



Statement of evidence relative to this corner location is on back of page.

I hereby certify that this document and the data contained herein was prepared by me or under my direct supervision.

Robert Jones 8-19-91
SIGNATURE DATE

Registration No. 11864

- Land Surveyor, Professional Engineer
- County Surveyor, County Engineer

OFFICE OF THE COUNTY RECORDER

County of McLeod

I hereby certify that this document was filed in the Co. Recorders office at 2 P .M. on the 18th day of Aug A.D., 1991

County Recorder Carmen Ostlie

By _____, Deputy

DOCUMENT NO. 241024

Statement of Evidence:

Northeast Corner Section 13, T 115 N, R 30 W

- 1855 - The original Public Land Survey of the township line was completed by John Ryan. A wood post was set in a mound of dirt to mark the corner. Reference was made to four bearing trees.
- 1895 - I. C. Christlieb, McLeod County Surveyor, set an iron monument to mark the corner.
- 1941 - The Minnesota Highway Department right of way map shows the corner to be about 68 feet west of P.O.T. 856+00 as scaled on the map. It was located at the centerline of a north/south road and in line with a fence to the west.
- 1942 - All evidence of the corner was probably destroyed when T.H. 15 was graded.
- 1944 & 1949 - Lewis Merrill, McLeod County Surveyor, filed plats entitled LAKEVIEW and WOODED SHORES respectively. Both were tied to the northeast corner of Section 13.
- 1969 - Dickman Knutson, McLeod County Surveyor, searched for the corner but did not find anything. The corner was re-established according to monumentation found in the plats of LAKEVIEW and WOODED SHORES. A McLeod County cast iron monument was set to mark the corner.
- 1989 - Willard Pellinen, McLeod County Surveyor, found the cast iron monument and set new reference ties.
- 1990 - R. C. Jones, Registered Land Surveyor with Mn/DOT, found the cast iron monument about 2" below the ground. All the reference ties were also found.

The cast iron monument is accepted as the corner position because it fits two plats and it is located 68.34 feet west of T.H. 15 P.O.T. 856+09.23, which substantially fits the position depicted on the right of way map.

For additional information, contact the Mn/DOT Surveys Section at Willmar, Mn 56201.

CERTIFICATE OF LOCATION OF GOVERNMENT CORNER

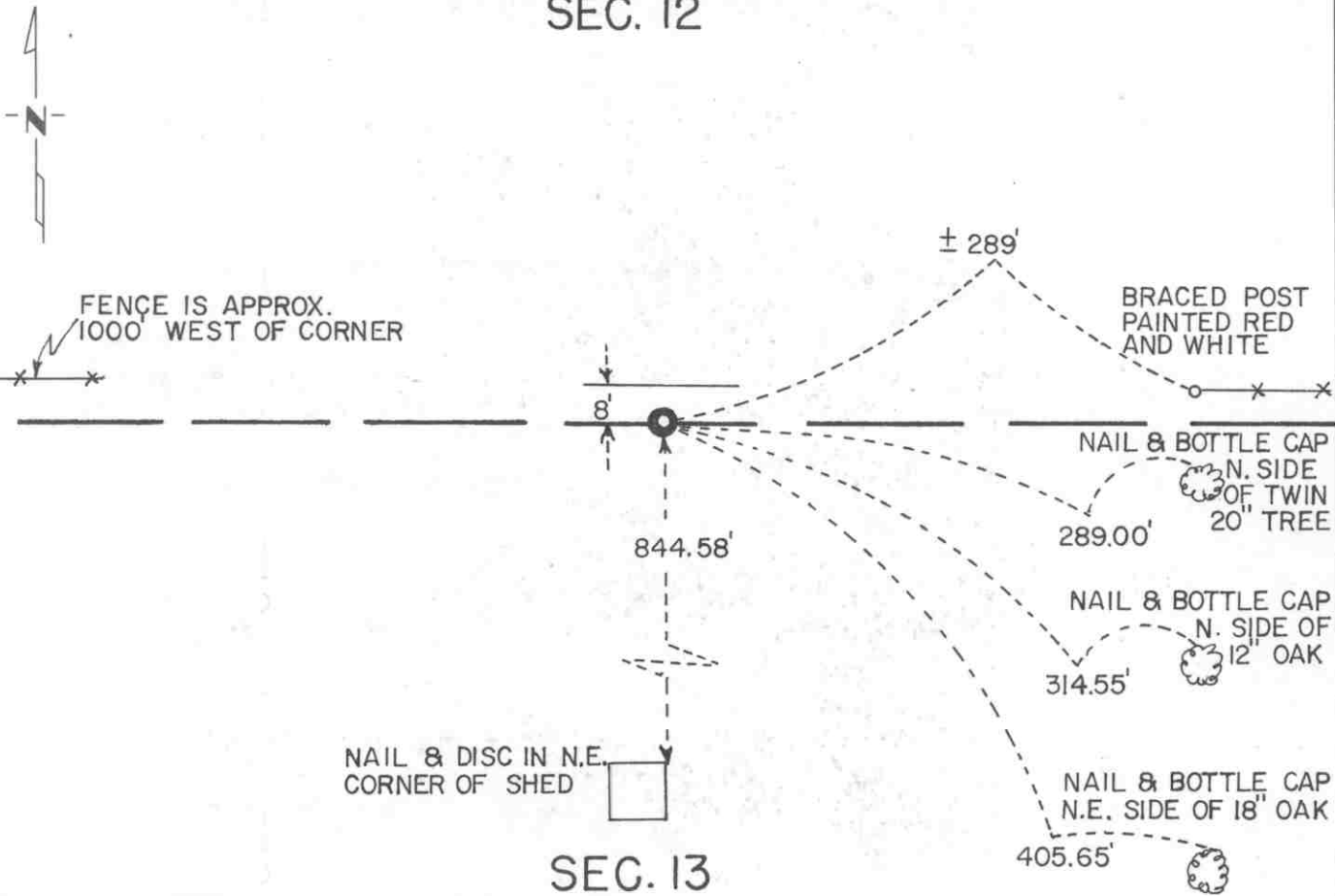
North Quarter Corner of Section 13, Township 115 N, Range 30 W, 5th P.M.

STATE OF MINNESOTA, County of McLeod

At the corner location shown on the sketch:

- On April 13, 1990 found a 2 1/2" by 1 1/2" rectangular iron monument 2 feet below ground
DATE
- left monument as found, lowered monument, removed monument (explain)
- On _____ placed a _____
DATE

SKETCH OF REFERENCE TIES SEC. 12



Statement of evidence relative to this corner location is on back of page.

I hereby certify that this document and the data contained herein was prepared by me or under my direct supervision.

Robert Gans
SIGNATURE

8-26-91
DATE

Registration No. 11864

- Land Surveyor, Professional Engineer
- County Surveyor, County Engineer

OFFICE OF THE COUNTY RECORDER

County of McLeod

I hereby certify that this document was filed in the Co. Recorders office at 2 P .M. on the 18th day of Sep A.D., 1991

County Recorder Charmen Ostlie

By _____, Deputy

DOCUMENT NO. 241026

Statement of Evidence:

North Quarter Corner Section 13, T 115 N, R 30 W

- 1855 - The original Public Land Survey was completed by Thomas Simpson. A wood post was set over a charred stake in a dirt mound to mark the corner. Trenches and pits were dug to build the mound. Osage orange was planted at the northeast and southwest corners of the mound.
- 1895 - I. C. Christlieb, McLeod County Surveyor, set a 2 1/2" by 1 1/2" rectangular iron monument at the corner. His measurement to the northwest corner of Section 13 was 2648 feet.
- 1974 - Willard Pellinen, McLeod County Surveyor, found a 2 1/2" by 1 1/2" rectangular iron monument and set reference ties. The distance measured to the northwest corner of Section 13 was 2652 feet. The corner was located about 8 feet south of an east/west fence line about 300 feet to the east.
- 1990 - R. C. Jones, Registered Land Surveyor with Mn/DOT, found the 2 1/2" by 1 1/2" rectangular iron monument about 2 feet below the ground in a plowed field.

The iron monument is accepted as the corner location because it was probably set according to evidence of the original Public Land Survey corner. It is located about 8 feet south of east/west fences, one of which is about 300 feet east and the other is about 800 feet west of the corner.

For additional information, contact the Mn/DOT Surveys Section at Willmar, Mn 56201.

CERTIFICATE OF LOCATION OF GOVERNMENT CORNER

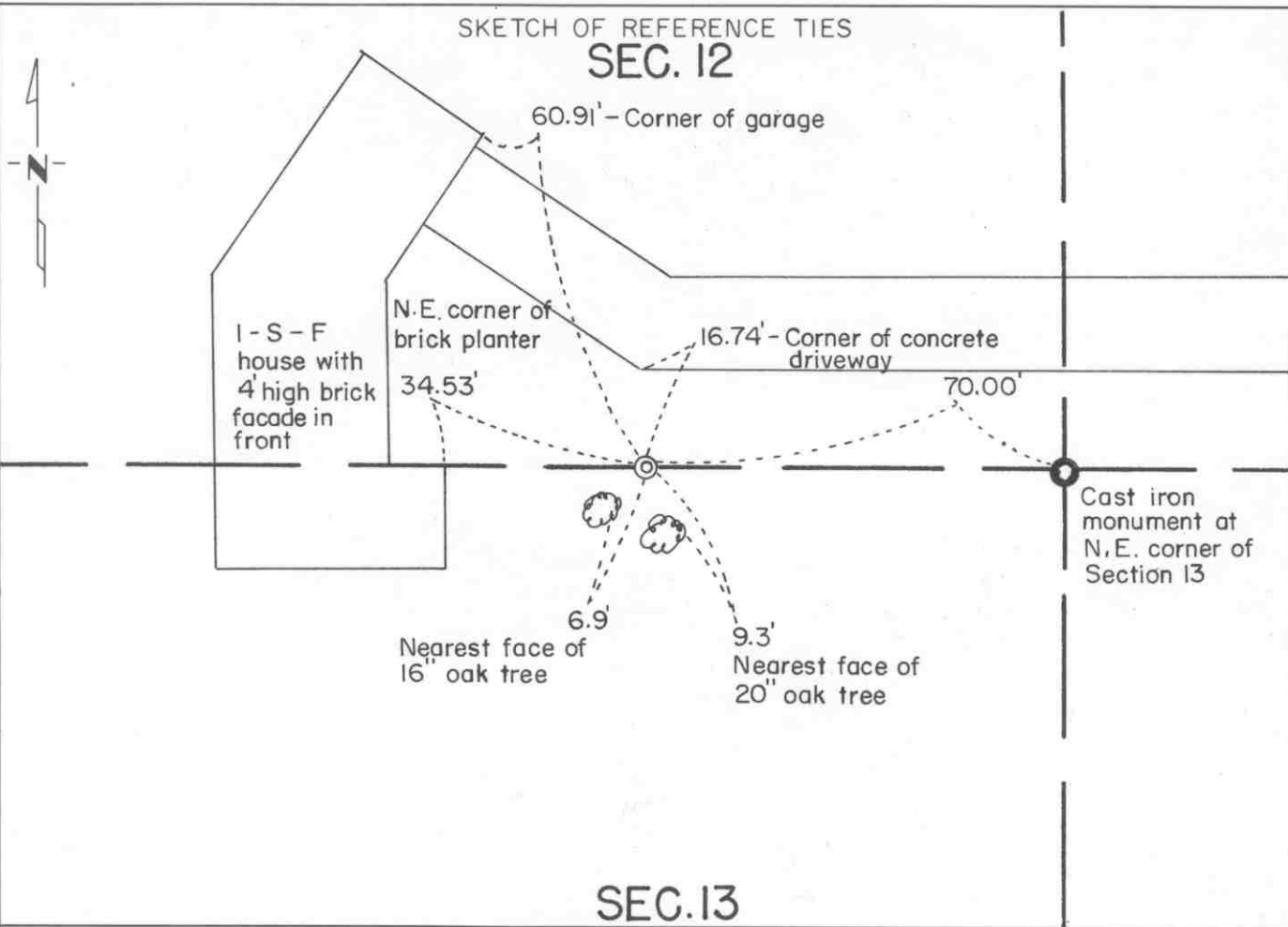
Witness Corner to Meander Corner No. 8

on the north line _____ of Section 13, Township 115 N, Range 30 W, 5th P.M.

STATE OF MINNESOTA, County of McLeod

At the corner location shown on the sketch:

- On _____ found a _____
DATE
- left monument as found, lowered monument, removed monument (explain)
- On Feb. 1, 1993 placed a 3/4" diameter iron pin with a MnDOT aluminum cap on top
DATE about 1" below the ground surface



Statement of evidence relative to this corner location is on back of page.

I hereby certify that this document and the data contained herein was prepared by me or under my direct supervision.

Robert Gans 2-2-93
SIGNATURE DATE

Registration No. 11864

Land Surveyor, Professional Engineer

County Surveyor, County Engineer

OFFICE OF THE COUNTY RECORDER

County of McLeod

I hereby certify that this document was filed in the Co. Recorders office at 9 A. .M. on the 3rd day of February, A.D., 1993

County Recorder Carmen Oetli

By Jan Petrick, Deputy

DOCUMENT NO. 250338

Statement of Evidence:

Witness Corner to Meander Corner No. 8
on the North Line of Section 13, T 115 N, R 30 W

- 1855- The original Public Land Survey was completed by Thomas Simpson. A wood post was set in a mound of dirt on the east shore of a lake to mark the location of the meander corner. It was set 2.90 chains (191.4 feet) west of the northeast corner of the section.
- 1944 & 1949- Lewis Merrill, McLeod County Surveyor, filed plats entitled WOODED SHORES and LAKEVIEW in these respective years. Neither plat shows a location for the meander corner. The LAKEVIEW plat indicates that the distance from the northeast corner of the section to the east shore of Lake Marion is about 170 feet. Therefore, the meander corner would fall in the lake.
- 1969- Dickman Knutson, McLeod County Surveyor, re-established the location of the northeast corner of Section 13 according to monumentation found in the above two subdivision plats. It appears that he made no effort to re-establish the meander corner.
- 1989- Willard Pellinen, McLeod County Surveyor, traversed around Section 13 and computed a location for the meander corner based on a proration of the original government chainage. This placed it 192.80 feet west of the northeast corner of the section and on line between the section corner and the north quarter corner of the section.
- 1993- A Mn/DOT survey crew (Gene East, crew chief) found that the computed position for the meander corner fell in Lake Marion. Therefore, a 3/4" diameter iron pin with a Mn/DOT aluminum cap on top was set on the north line of the section as a Witness Corner to the meander corner. It is 122.80 feet east of the meander corner and 70.00 feet west of the northeast corner of the section.

For additional information, contact the Mn/DOT Surveys Section at Willmar, Mn 56201.

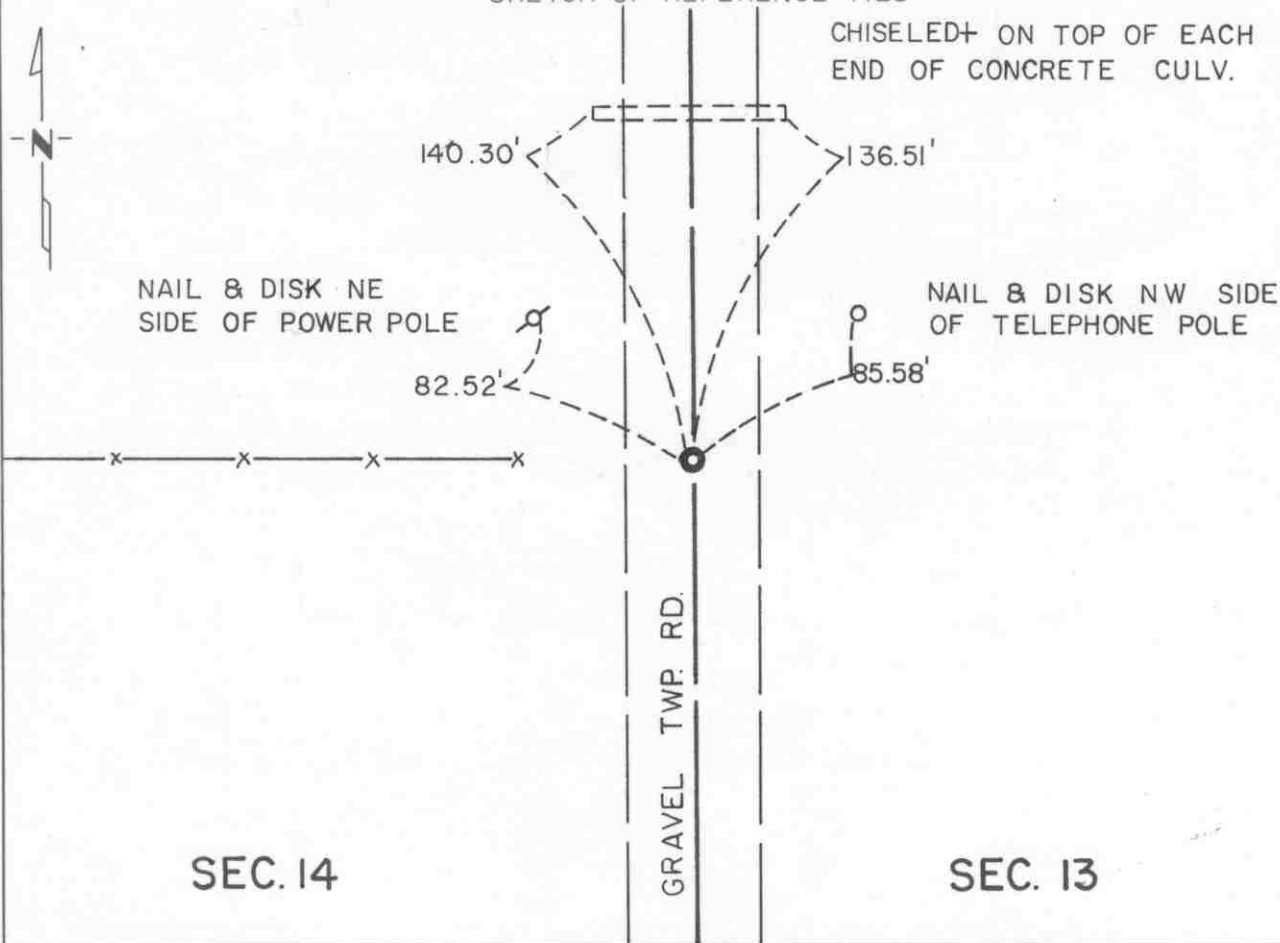
CERTIFICATE OF LOCATION OF GOVERNMENT CORNER

East Quarter _____ Corner of Section 14, Township 115 N, Range 30 W, 5th P.M.
STATE OF MINNESOTA, County of McLeod

At the corner location shown on the sketch:

- On Apr. 16, 1990 found a 1/2" diameter iron pipe about 4" below the road surface and set a P.K. nail over it at the surface
DATE
- left monument as found, lowered monument, removed monument (explain)
- On _____ placed a _____
DATE

SKETCH OF REFERENCE TIES



Statement of evidence relative to this corner location is on back of page.

I hereby certify that this document and the data contained herein was prepared by me or under my direct supervision.

Robert G. Jones
SIGNATURE

8-19-91
DATE

Registration No. 11864

- Land Surveyor, Professional Engineer
- County Surveyor, County Engineer

OFFICE OF THE COUNTY RECORDER
County of McLeod

I hereby certify that this document was filed in the Co. Recorders office at 2 P .M. on the 18th day of Sep A.D. 1991

County Recorder Carmen Ostlie
By _____, Deputy

DOCUMENT NO. 241028

Statement of Evidence:

East Quarter Corner Section 14, T 115 N, R 30 W

- 1855 - The original Public Land Survey was completed by Thomas Simpson. A wood post was set over a charred stake in a dirt mound to mark the corner. Trenches and pits were dug to build the mound. Osage orange was planted at the northeast and southwest corners of the mound.
- 1895 - I. C. Christlieb, McLeod County Surveyor, set an iron monument at the corner.
- 1974 - Dickman Knutson, McLeod County Surveyor, found a 2 1/2" by 1 1/2" iron monument set by Christlieb about 1.5 feet below the road surface. There was a stone on top of the iron monument. Reference ties were set and a 1/2" diameter iron pipe was set above the found iron monument. It was located at the centerline of a north/south road and in line with a fence to the west.
- 1990 - R. C. Jones, Registered Land Surveyor with Mn/DOT, found the iron pipe about 4" below the road surface and set a nail over it at the surface. All the reference ties were recovered.

The 1/2" diameter iron pipe is accepted as the corner location because the 2 1/2" by 1 1/2" iron monument directly below it was probably set according to evidence of the original Public Land Survey corner. It is located at the centerline of a north/south road and in line with a fence to the west.

For additional information, contact the Mn/DOT Surveys Section at Willmar, Mn 56201.

CERTIFICATE OF LOCATION OF GOVERNMENT CORNER

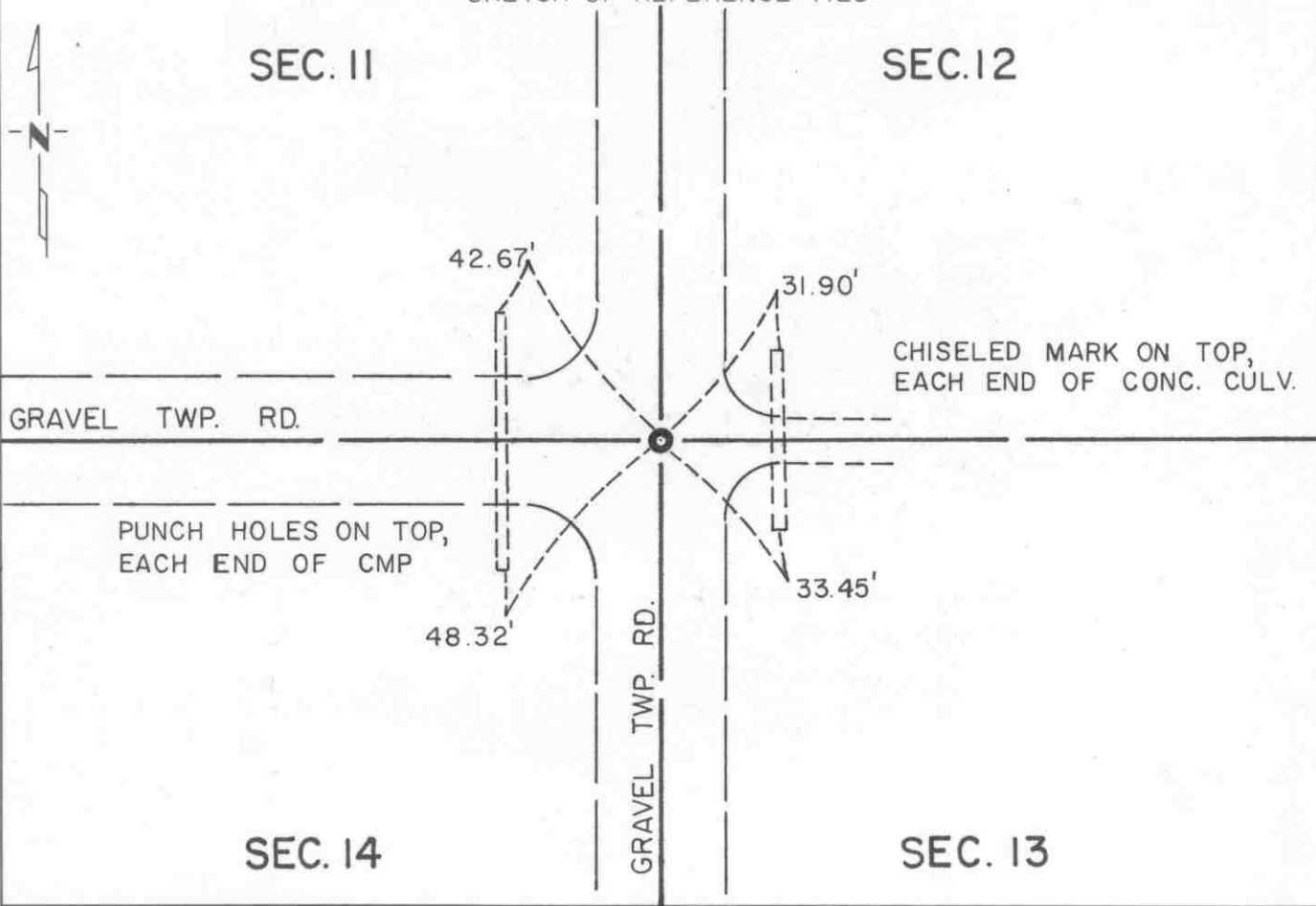
Northeast Corner of Section 14, Township 115 N, Range 30 W, 5th P.M.

STATE OF MINNESOTA, County of McLeod

At the corner location shown on the sketch:

- On Apr. 13, 1990 found a 2½" by 1½" iron monument several inches below the road surface and set a nail over it at the surface
DATE
- left monument as found, lowered monument, removed monument (explain)
- On _____ placed a _____
DATE

SKETCH OF REFERENCE TIES



Statement of evidence relative to this corner location is on back of page.

I hereby certify that this document and the data contained herein was prepared by me or under my direct supervision.

Robert Jones
SIGNATURE

8-19-91
DATE

Registration No. 11864

- Land Surveyor, Professional Engineer
- County Surveyor, County Engineer

OFFICE OF THE COUNTY RECORDER
County of McLeod

I hereby certify that this document was filed in the Co. Recorders office at 2 P .M. on the 10th day of Aug, 1991

County Recorder Carmen Bellie
By _____, Deputy

DOCUMENT NO. 241027

Statement of Evidence:

Northeast Corner Section 14, T 115 N, R 30 W

- 1855 - The original Public Land Survey was completed by Thomas Simpson. A wood post was set over a charred stake in a dirt mound to mark the corner. Trenches and pits were dug to build the mound. Osage orange was planted at the corners of the mound.
- 1895 - I. C. Christlieb, McLeod County Surveyor, set an iron monument at the corner.
- 1974 - Willard Pellinen, McLeod County Surveyor, found the iron monument set by Christlieb and set reference ties to it. The monument was located at the centerline of a north/south road and the centerline of a road to the west.
- 1990 - R. C. Jones, Registered Land Surveyor with Mn/DOT, found the iron monument several inches below the road surface and set a nail over it at the road surface. The reference ties were recovered.

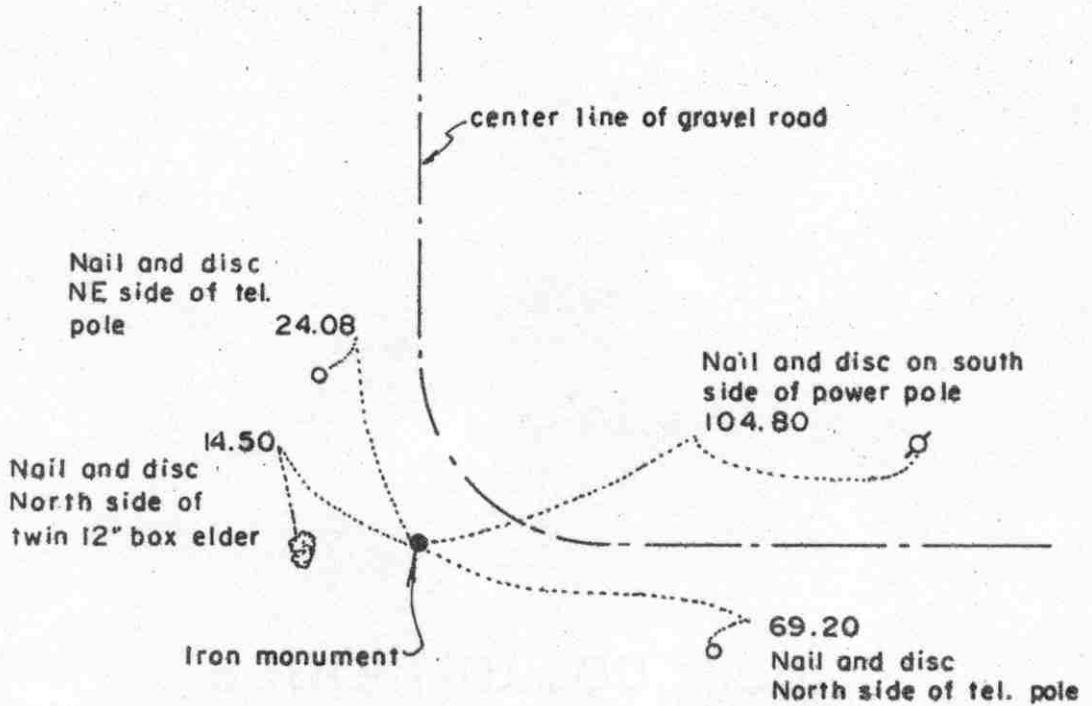
The iron monument is accepted as the corner location because it was probably set according to evidence of the original Public Land Survey corner. It is located at the centerline of a north/south road and at the centerline of a road to the west.

For additional information, contact the Mn/DOT Surveys Section at Willmar, Mn 56201.

Certificate of Location of Government Corner



SKETCH OF REFERENCE TIES
(NO SCALE)



Statement of evidence relative to this corner location on sheet 2

I hereby certify that this document was prepared by me or under my direct supervision.

Willard Pellinen
Willard Pellinen
McLeod County Surveyor
License No. 9626

Date 1/5/89

OFFICE OF THE COUNTY RECORDER
MCLEOD COUNTY, MINNESOTA.

I hereby certify that this document was filed in this office at 1 o'clock P.M. on the 31st day of Jan., 1989.

Carmen Ollie, County Recorder

By _____, Deputy

Document No. 226716

Certificate of Location of Government Corner

This corner was originally established by the Government Land Office in 1855 (Thomas Simpson, surveyor). He set post in mound, with trench, pits charred stake and he planted osage orange seeds on NE and SW sides.

In 1895 I.C.Christlieb resurveyed the Township of Collins and set an iron monument at this corner.

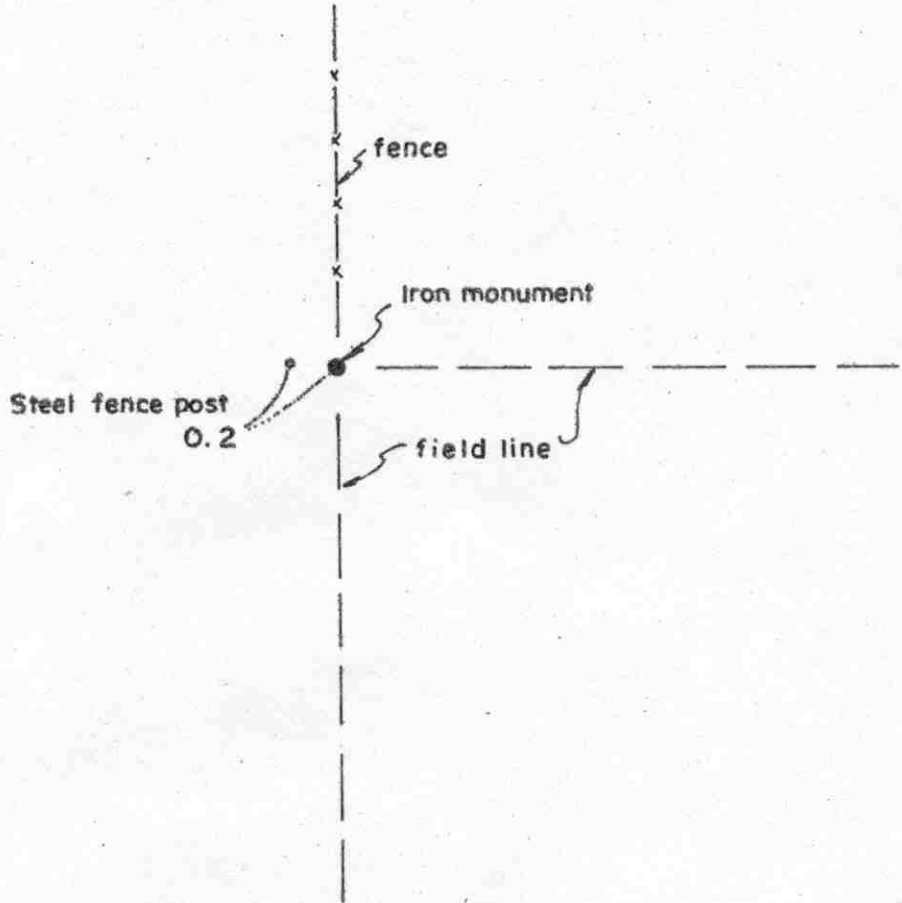
On September 6, 1973, we found the iron monument set by Christlieb. This monument was $2\frac{1}{2}$ inches by $1\frac{1}{2}$ inches on top. We measured 2672.30 feet to the northeast corner of Section 14, compared with a distance of 2670 by Christlieb. Most of Christlieb's distances in Collins Township were shorter than we measure.

We feel the monument set by Christlieb has perpetuated the location of the true north quarter corner of Section 14.

Certificate of Location of Government Corner



SKETCH OF REFERENCE TIES
(NO SCALE)



Statement of evidence relative to this corner location on sheet 2

I hereby certify that this document was prepared by me or under my direct supervision.

Willard Pellinen

Willard Pellinen
McLeod County Surveyor
License No. 9626

Date 1/7/89

OFFICE OF THE COUNTY RECORDER
MCLEOD COUNTY, MINNESOTA.

I hereby certify that this document was filed in this office at 1 o'clock P.M. on the 31st day of Jan., 1989.

Carmen Ostlie, County Recorder
By _____, Deputy

Document No. 226717

Certificate of Location of Government Corner

This corner was established in 1855 by Thomas Simpson of the Government Land Office. His notes state he set quarter section post in mound with trench, pits and charred stake and he planted osage orange seeds at the northeast and southwest corners of mound.

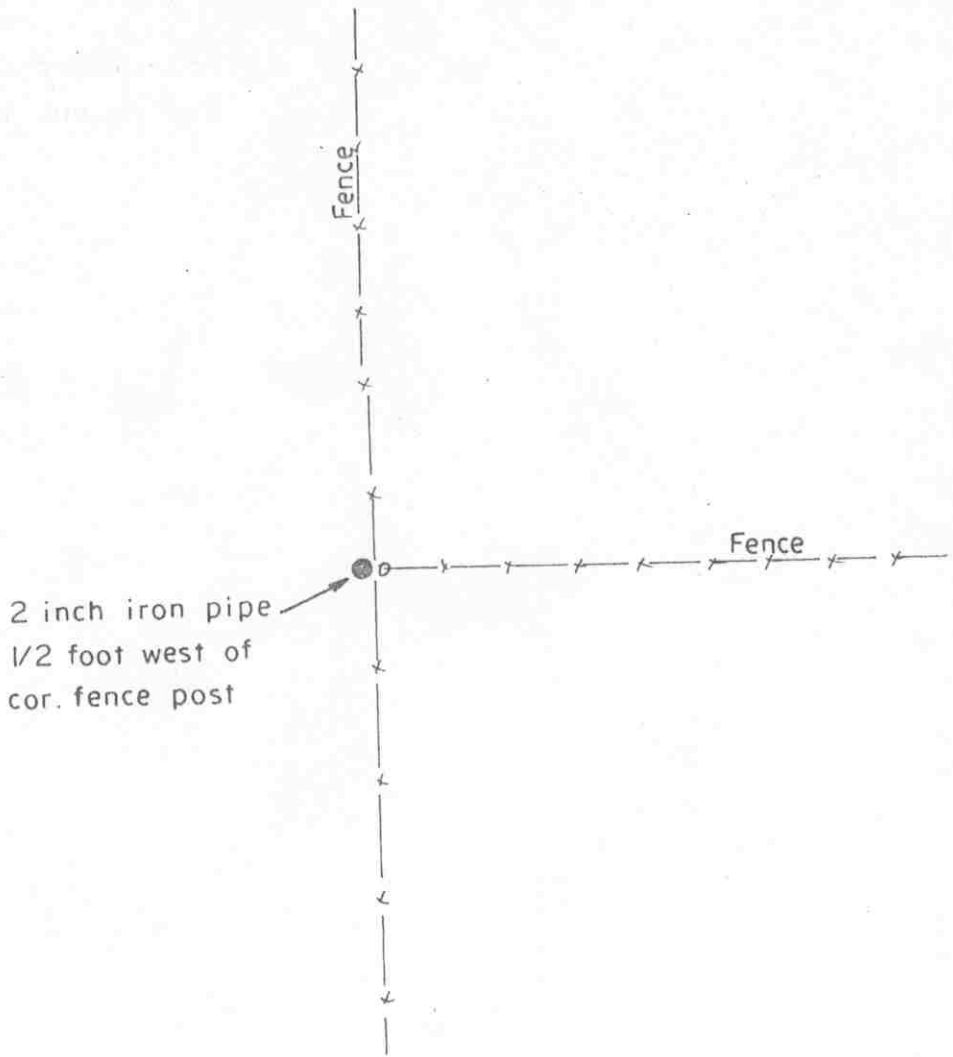
In 1895, I. C. Christlieb resurveyed the Township of Collins and set an iron monument at this corner.

On March 3, 1976, we found the iron monument set by Christlieb. This monument has perpetuated the correct location of the east quarter corner of Section 15.

Certificate of Location of Government Corner

NORTHEAST corner, Section 15, Township 115 North, Range 30 West

SKETCH OF REFERENCE TIES (NO SCALE)



2 inch iron pipe
1/2 foot west of
cor. fence post

Statement of evidence relative to this corner location on sheet 2

I hereby certify that this document was prepared by me or under my direct supervision.

Willard Pellinen
Willard Pellinen
McLeod County Surveyor
License No. 9626.

Date July 14, 1986

OFFICE OF THE COUNTY RECORDER
MCLEOD COUNTY, MINNESOTA

I hereby certify that this document was filed in this office at 9 o'clock A M. on the 23rd day of January 19 96.

Carmen Potlie Mulder, County Recorder

By _____, Deputy.

Document No. 270526

Certificate of Location of Government Corner

NE corner, Section 15, Township 115 North, Range 30 West

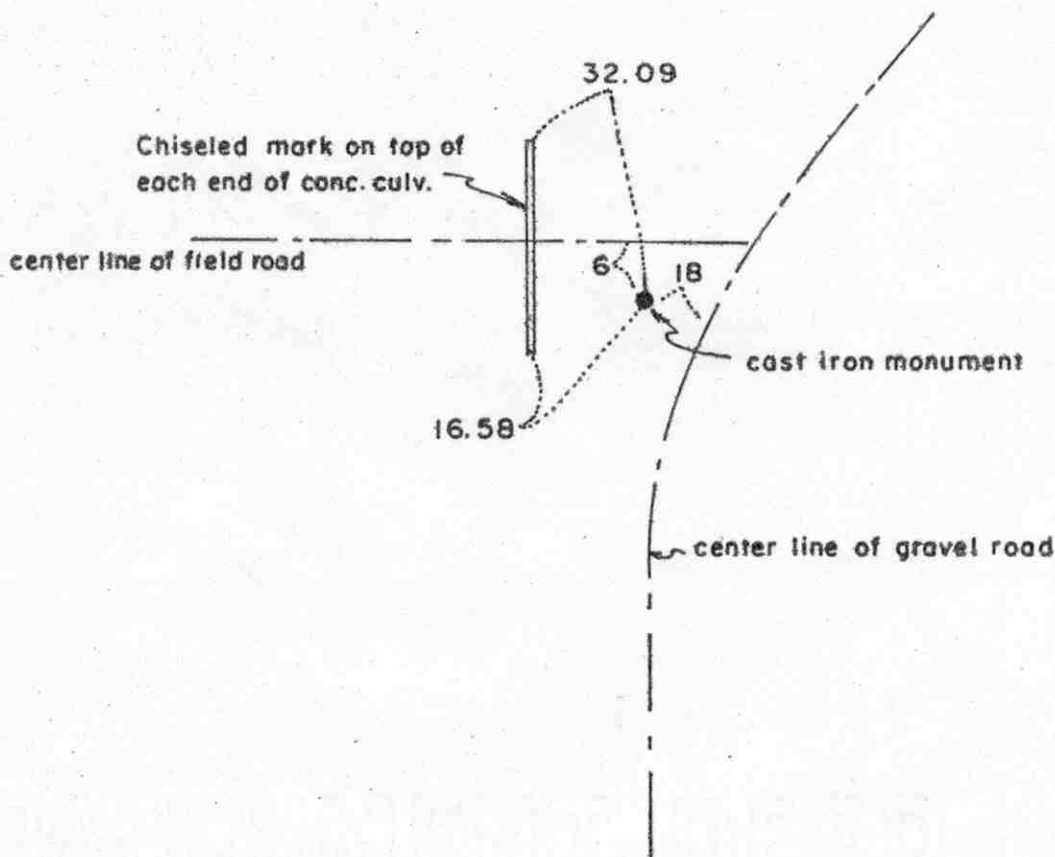
August, 1855. Thomas Simpson of the General Land Office set a meander post 10 chains (660 feet) south of the section corner. His notes show the section corner to be in the lake. He set the meander post in a mound with trench and pits, charred stake and he planted osage orange seeds at the northeast and southwest corners of the mound.

September 6, 1973. Mr. William Schmandt said he saw a square iron monument at the corner about 20 to 25 years ago and he pounded it down at that time. Mr. Schmandt showed McCombs Knutson Associates (Dickman Knutson, county surveyor) where the monument was. Knutson and Schmandt couldn't find the monument so Knutson set a 2 inch diameter iron pipe at the spot shown by Mr. Schmandt. This was at the intersection of fences north, south and east which has been accepted by adjoining land owners as the section corner.

Certificate of Location of Government Corner



SKETCH OF REFERENCE TIES
(NO SCALE)



Statement of evidence relative to this corner location on sheet 2

I hereby certify that this document was prepared by me or under my direct supervision.

Willard Pellinen
Willard Pellinen
McLeod County Surveyor
License No. 9626

Date 11/5/89

OFFICE OF THE COUNTY RECORDER
MCLEOD COUNTY, MINNESOTA.

I hereby certify that this document was filed in this office at 1 o'clock P.M. on the 31st day of Jan., 1989.

Carmin Ostlie, County Recorder
By _____, Deputy

Document No. 226718

Certificate of Location of Government Corner

This corner was originally established by the Government Land Office in 1855 (Thomas Simpson, surveyor). He set quarter section post in mound with trench, pits, charred stake and planted osage orange seeds to the northeast and southwest.

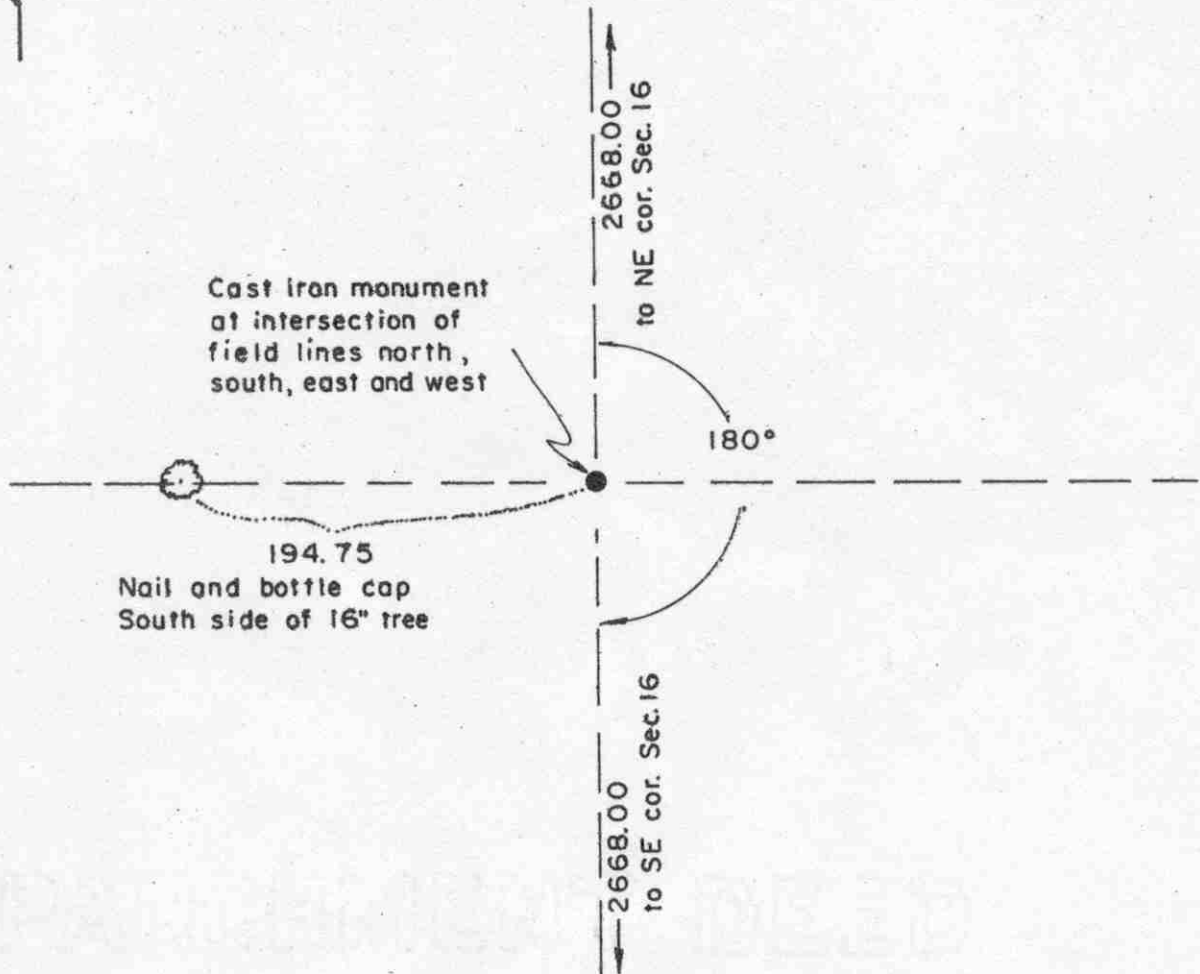
In 1895 I.C.Christlieb resurveyed the Township of Collins and set an iron monument at this corner.

May 7, 1974, we found the iron monument set by Christlieb down 2 feet, took reference ties and set a McLeod County cast iron monument over the found monument.

We feel the monument set by Christlieb has perpetuated the correct location of the north quarter corner of Section 15.

Certificate of Location of Government Corner

SKETCH OF REFERENCE TIES
(NO SCALE)



Statement of evidence relative to this corner location on sheet 2

I hereby certify that this document was prepared by me or under my direct supervision.

Willard Pellinen
Willard Pellinen
McLeod County Surveyor
License No. 9626
Date 1/9/89

OFFICE OF THE COUNTY RECORDER
MCLEOD COUNTY, MINNESOTA.

I hereby certify that this document was filed in this office at 1 o'clock P.M. on the 31st day of Jan., 1989.

Carmen Ostlie, County Recorder
By _____, Deputy

Document No. 226720

Certificate of Location of Government Corner

This corner was established in 1855 by Thomas Simpson of the Government Land Office. His notes show he set post in mound with trench and pits and charred stake and he planted osage orange seeds at the northeast and southwest corners of mound.

In 1895, I .C. Christlieb resurveyed the Township of Collins and set an iron monument at this corner.

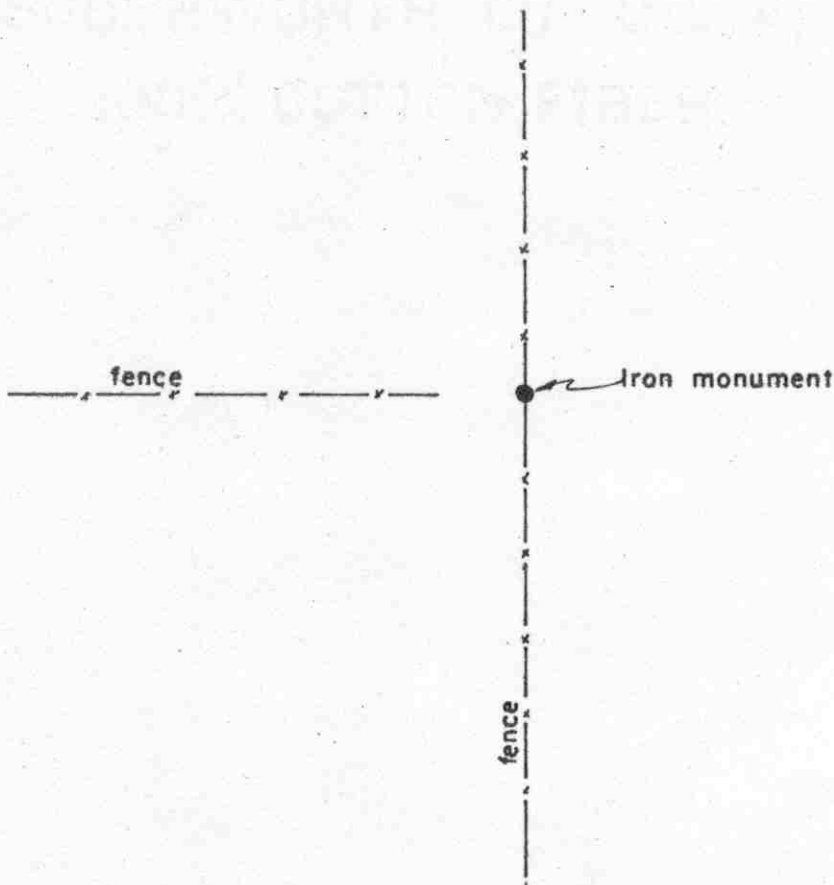
On July 15, 1976, we searched the area for the monument set by Christlieb, but the monument has been plowed out. We set a McLeod County cast iron monument by lost methods (single porportionat measure between the section corners) We had a distance of 2668.00 feet to the northeast and southeast corners of Section 26, compared with a distance of 2666 feet by Christlieb in 1895.

Certificate of Location of Government Corner



SKETCH OF REFERENCE TIES

(NO SCALE)



Statement of evidence relative to this corner location on sheet 2

I hereby certify that this document was prepared by me or under my direct supervision.

Willard Pellinen
Willard Pellinen
McLeod County Surveyor
License No. 9626

Date 1/2/89

OFFICE OF THE COUNTY RECORDER
MCLEOD COUNTY, MINNESOTA.

I hereby certify that this document was filed in this office at 1 o'clock P.M. on the 31st day of Jan., 19 89.

Armen Ostlie, County Recorder
By _____, Deputy

Document No. 226719

Certificate of Location of Government Corner

This corner was originally established by the Government Land Office in 1855 (Thomas Simpson, surveyor). He set post, erected mound with trench and pits, charred stake and planted osage orange seeds at each angle.

In 1895 I.C.Christlieb resurveyed the Township of Collins and set an iron monument at this corner.

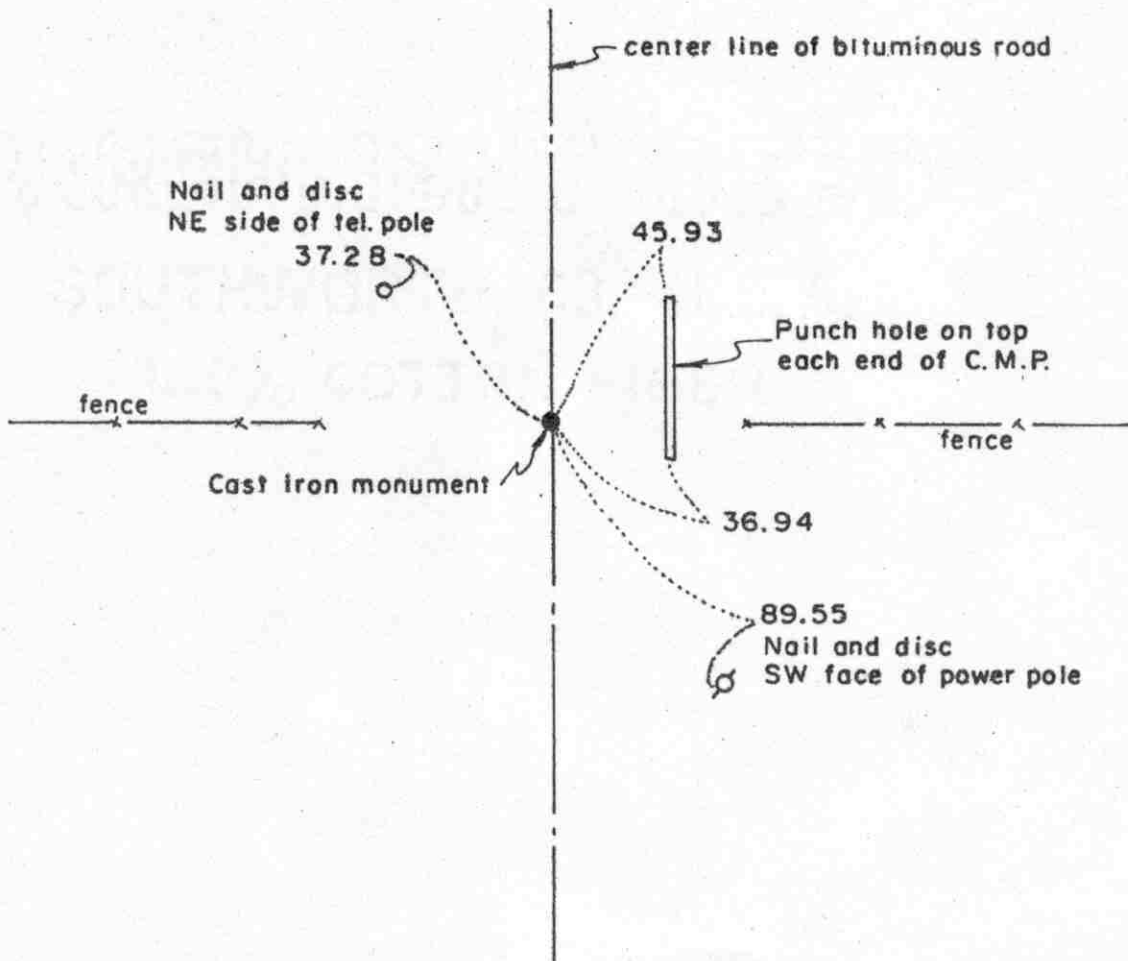
On May 7, 1974, we found an iron monument, 2½ inches square on top, at fence intersection. Fences north, south and west.

We accept the monument set by Christlieb as having perpetuated the correct location of the northeast corner of Section 16.

Certificate of Location of Government Corner



SKETCH OF REFERENCE TIES
(NO SCALE)



Statement of evidence relative to this corner location on sheet 2

I hereby certify that this document was prepared by me or under my direct supervision.

Willard Pellinen
Willard Pellinen
McLeod County Surveyor
License No. 9626
Date 1/2/89

OFFICE OF THE COUNTY RECORDER
MCLEOD COUNTY, MINNESOTA.

I hereby certify that this document was filed in this office at 1 o'clock P.M. on the 31st day of Jan., 19 89.

Carmen Ostlie, County Recorder
By _____, Deputy
Document No. 226721

North Quarter corner, Section 16, Township 115 North, Range 30 West

Certificate of Location of Government Corner

This corner was originally established by the Government Land Office in 1855 (Thomas Simpson, surveyor) He set a post in mound with trench and pits, charred stake, and planted osage orange seeds northeast and southwest of corner.

In 1895 I.C.Christlieb resurveyed Collins Township and set an iron monument 5 feet east of the north quarter corner of Section 16.

May 15, 1974. We dug for corner with backhoe and found the iron monument ($1\frac{1}{2}$ inches by $2\frac{1}{2}$ inches on top) set by Christlieb down $2\frac{1}{2}$ feet below the road surface. We took reference ties to monument.

On May 24, 1974 we set a spike at the true corner location and took reference ties.

In August, 1974, we set a McLeod County cast iron monument at the corner.

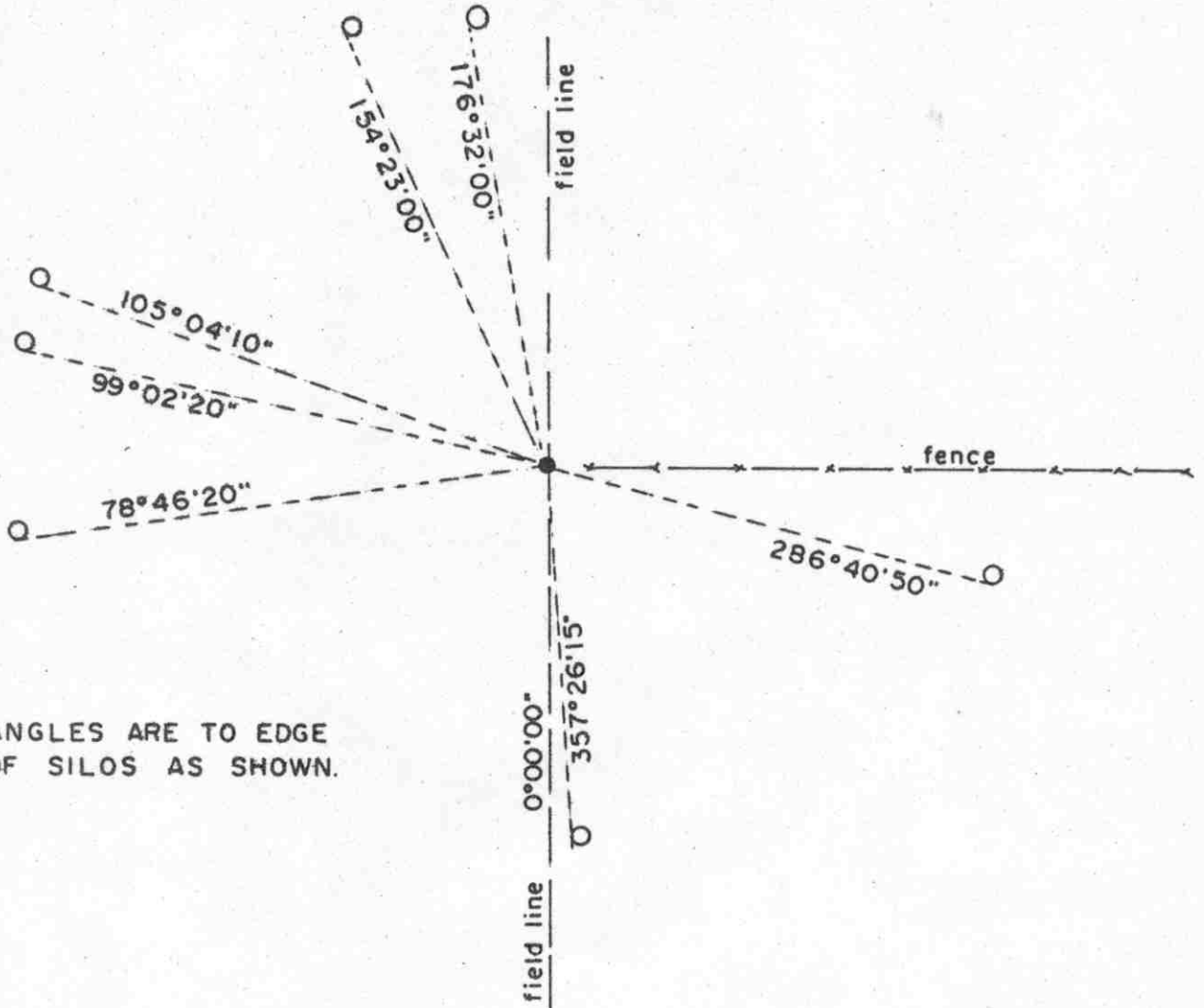
We accept the monument set by Christlieb as marking a point 5.00 feet east of the true corner as shown on his survey map.

Certificate of Location of Government Corner



SKETCH OF REFERENCE TIES

(NO SCALE)



ANGLES ARE TO EDGE OF SILOS AS SHOWN.

Statement of evidence relative to this corner location on sheet 2

I hereby certify that this document was prepared by me or under my direct supervision.

Willard Pellinen
 Willard Pellinen
 McLeod County Surveyor
 License No. 9626

Date 2/1/89

OFFICE OF THE COUNTY RECORDER
 MCLEOD COUNTY, MINNESOTA.

I hereby certify that this document was filed in this office at 3 o'clock P.M. on the 9th day of Feb. 19 89.

Carmen Ostlie, County Recorder

By _____, Deputy

Document No. 226873

Certificate of Location of Government Corner

This corner was originally set by Thomas Simpson of the Government Land Office in 1855. His notes state he set quarter section post in mound with trench, pits, charcoal stake and planted osage orange seeds at the northeast and southwest corners of mound.

In 1895, I. C. Christlieb resurveyed the Township of Collins and set an iron monument at this corner.

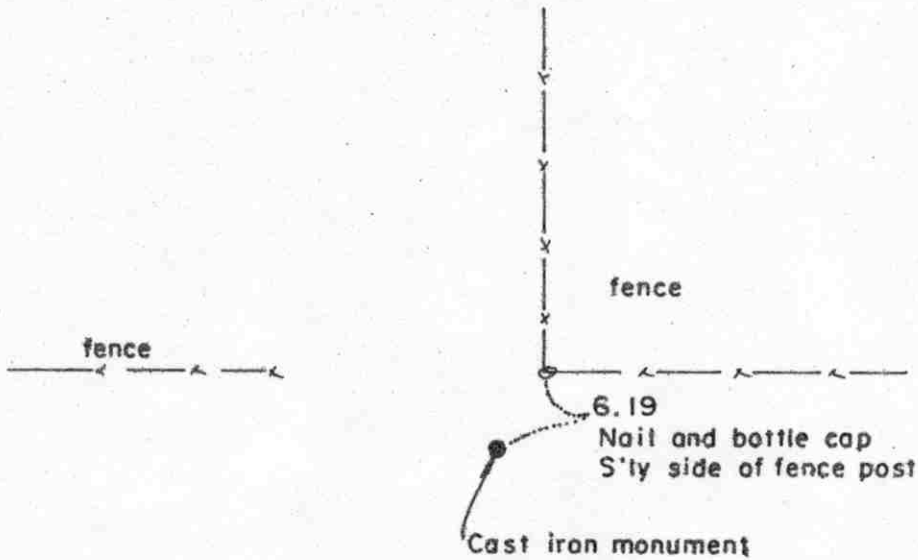
In May, 1981, we found the monument set by Christlieb, set in concrete. We measured the east line of Section 17 and had a distance of 2662.32 feet to the southeast corner of Section 17 and a distance of 2660.2 feet to the northeast corner, compared with distances of 2659 feet to each corner in 1895. Most of Christlieb's distances in Collins Township are shorter than we actually measure.

We feel the iron monument set by Christlieb in 1895 has perpetuated the correct location of the east quarter corner of Section 17.

Certificate of Location of Government Corner



SKETCH OF REFERENCE TIES
(NO SCALE)



Statement of evidence relative to this corner location on sheet 2

I hereby certify that this document was prepared by me or under my direct supervision.

Willard Pellinen
Willard Pellinen
McLeod County Surveyor
License No. 9626
Date 1/2/89

OFFICE OF THE COUNTY RECORDER
MCLEOD COUNTY, MINNESOTA.

I hereby certify that this document was filed in this office at 1 o'clock P.M. on the 31st day of Jan., 1989.

Carmen Dettie, County Recorder
By _____, Deputy

Document No. 226722

Northeast corner, Section 17, Township 115 North, Range 30 West

Certificate of Location of Government Corner

This corner was originally established by the Government Land Office in 1855 (Thomas Simpson, surveyor) He set post in mound, dug trench and pits, set charred stake and planted osage orange seeds at each angle.

In 1895 I.C.Christlieb resurveyed Collins Township and set an iron monument at this corner.

In May 1981 we searched the area for the monument set by Christlieb, but found only an iron pin about 5 feet south and 4 feet west of a fence corner. We measured a half mile south, north, east and west to found quarter corners and our distances were very close to a proration of Christlieb's distances. Our distances east and west were 2659.4 compared with 2658.5 by Christlieb. We had 2660.2 feet north and south, compared with 2659 by Christlieb.

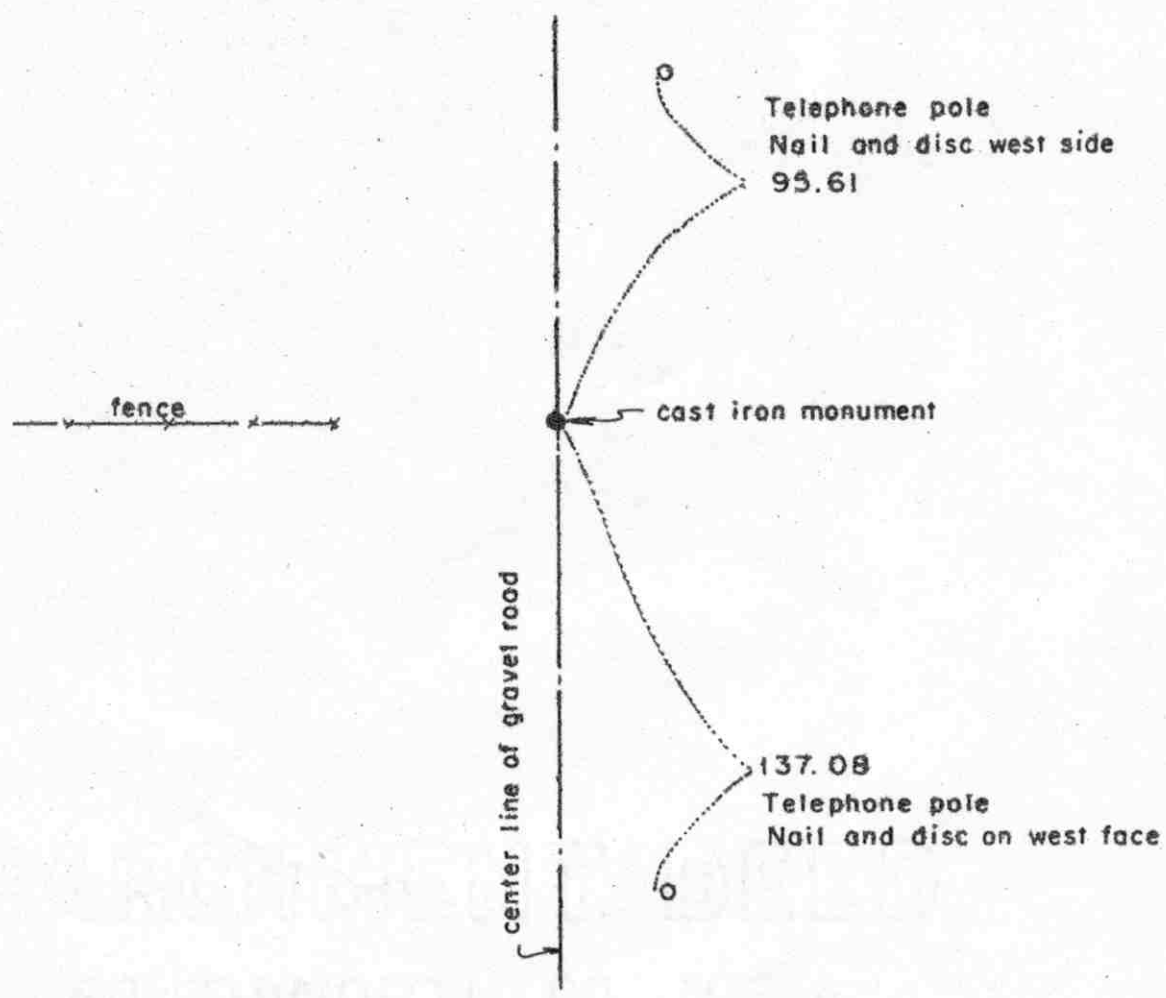
The iron pin we found was not the type of monument Christlieb set at most of the corners in Collins Township, but because the distances check out so close, we will accept the location of the iron pin as the correct northeast corner of Section 17.

On May 19, 1981, we set a cast iron monument in place of the iron pin.

Certificate of Location of Government Corner



SKETCH OF REFERENCE TIES
(NO SCALE)



Statement of evidence relative to this corner location on sheet 2

I hereby certify that this document was prepared by me or under my direct supervision.

Willard Pellinen
Willard Pellinen
McLeod County Surveyor
License No. 9626

Date 11/1/89

OFFICE OF THE COUNTY RECORDER
MCLEOD COUNTY, MINNESOTA.

I hereby certify that this document was filed in this office at 1 o'clock P.M. on the 31st day of Jan., 1989.

Carmina Ostlie, County Recorder
By _____, Deputy

Document No. 226723

Certificate of Location of Government Corner

This corner was originally established by the Government Land Office in 1855 (Thomas Simpson, surveyor). The set post in mound, with trench, pits and charred stake and planted osage orange seeds northeast and southwest.

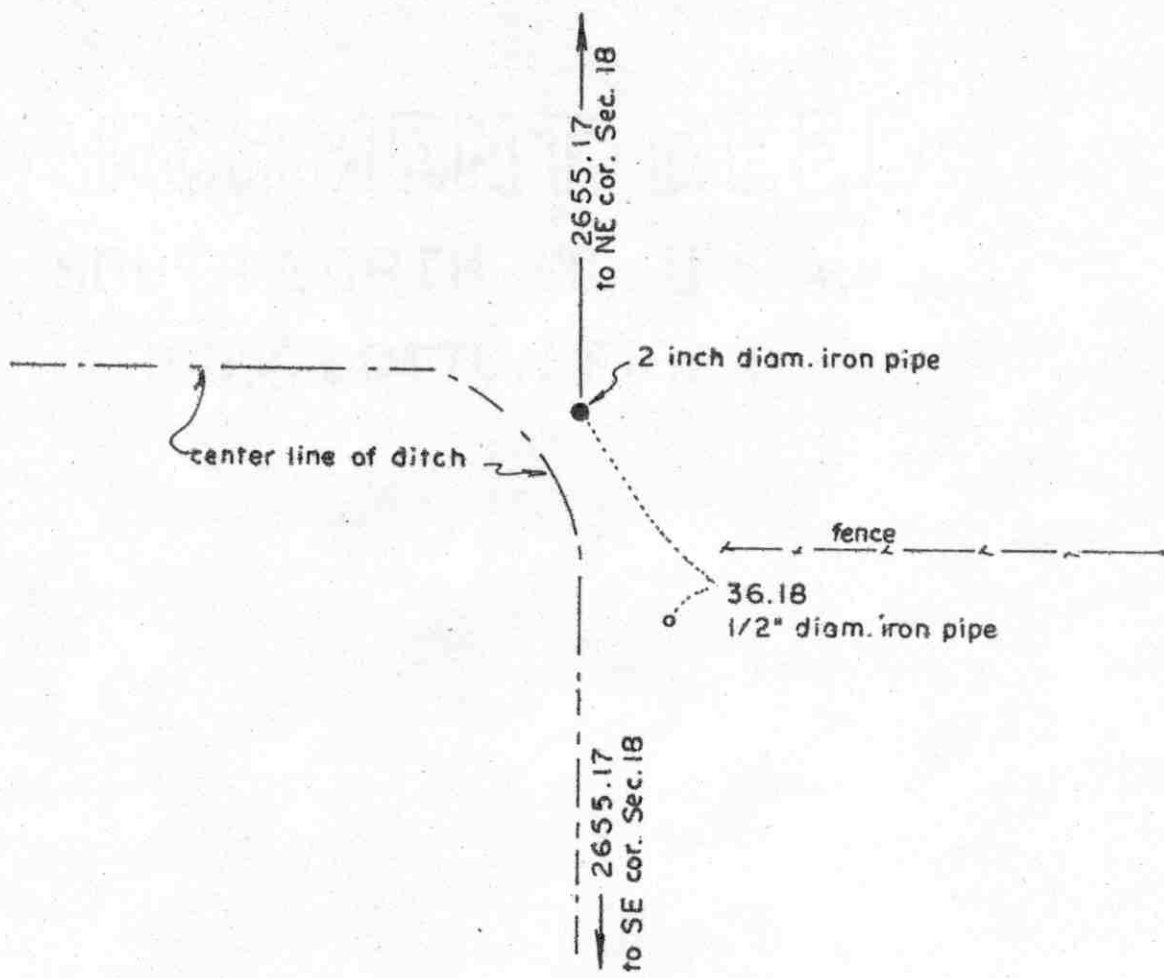
In 1895 I.C.Christlieb resurveyed Collins Township and set an iron monument at the north quarter corner.

On October 1, 1973, we found iron monument, took reference ties, and set a McLeod County cast iron monument in place of the found monument.

We accept the monument set by Christlieb as having perpetuated the true location of the north quarter corner of Section 17.

Certificate of Location of Government Corner

SKETCH OF REFERENCE TIES
(NO SCALE)



Statement of evidence relative to this corner location on sheet 2

I hereby certify that this document was prepared by me or under my direct supervision.

Willard Pellinen

Willard Pellinen
McLeod County Surveyor
License No. 9626

Date 1/22/89

OFFICE OF THE COUNTY RECORDER
MCLEOD COUNTY, MINNESOTA.

I hereby certify that this document was filed in this office at 1 o'clock P.M. on the 31st day of Jan., 1989.

Carmen Ostlie, County Recorder

By _____, Deputy

Document No. 226725

Certificate of Location of Government Corner

This corner was established in 1855 by Thomas Simpson of the Government Land Office. He set post in mound with trench and pits, charred stake, and he planted osage orange seeds at the northeast and southwest corners of the mound.

In 1895, I.C.Christlieb resurveyed the Township of Collins and set an iron monument at this corner.

In December, 1977, we searched for the monument set by Christlieb, but the monument was probably removed by ditch construction in area. We set a 2 inch diameter iron pipe using single proportionate measure between the section corners. Our distance to each section corner was 2655.77 feet compared with 1895 distance of 2647 feet to each corner. Most of our measured distances in Collins Township are from 2 to 8 feet longer than Christlieb's distances.

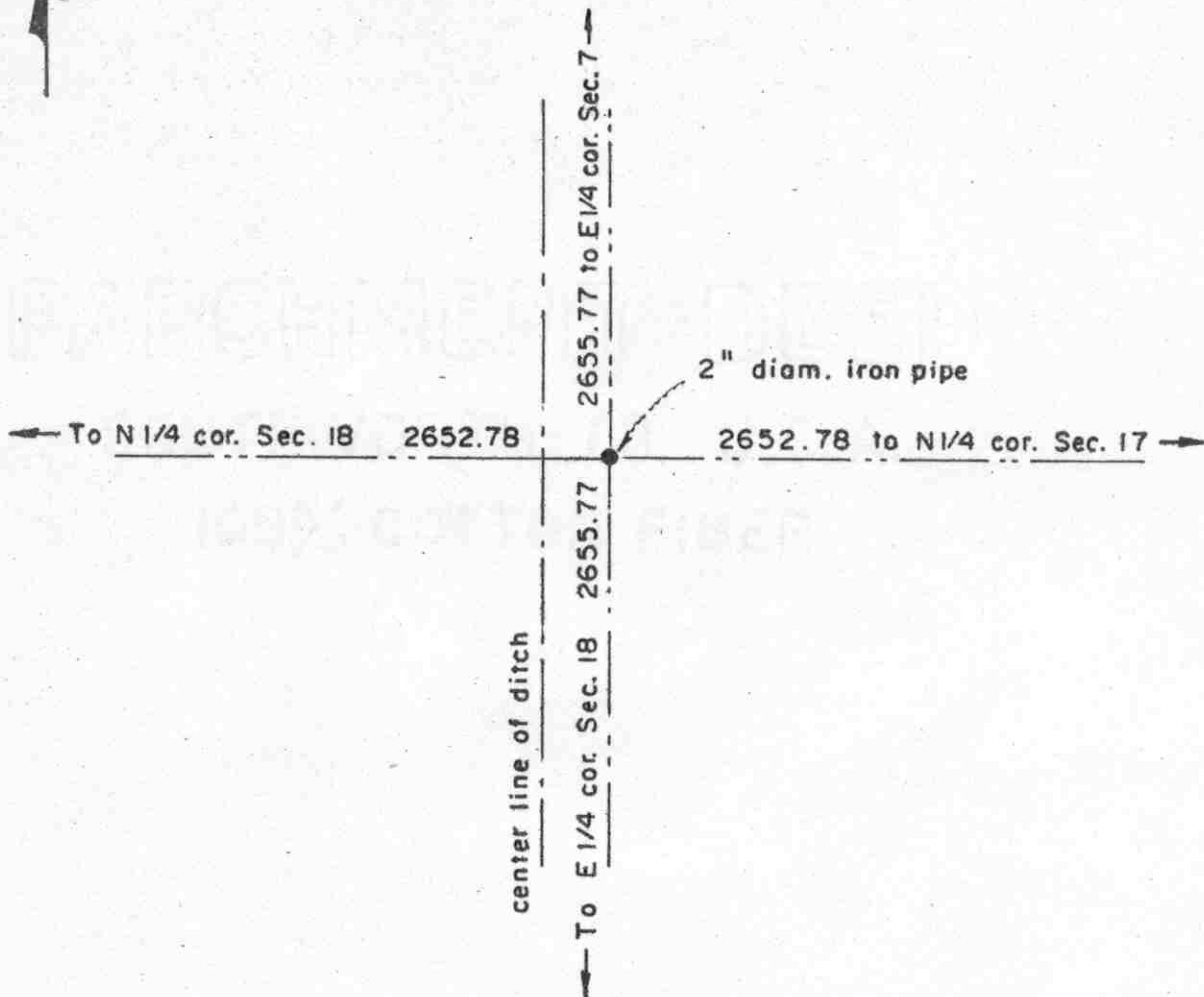
We feel this is the correct location of the east quarter corner of Section 18 as set by lost methods.

Certificate of Location of Government Corner



SKETCH OF REFERENCE TIES

(NO SCALE)



Statement of evidence relative to this corner location on sheet 2

I hereby certify that this document was prepared by me or under my direct supervision.

Willard Pellinen
 Willard Pellinen
 McLeod County Surveyor
 License No. 9626
 Date 1/15/89

OFFICE OF THE COUNTY RECORDER
MCLEOD COUNTY, MINNESOTA.

I hereby certify that this document was filed in this office at 1 o'clock P.M. on the 31st day of Jan., 1989.

Carmen Ostlie, County Recorder
 By _____, Deputy

Document No. 226724

Certificate of Location of Government Corner

This corner was originally established by Thomas Simpson of the Government Land Office in 1855. He set corner in mound with trench, pits and charred stake and planted osage orange seeds NE and SW of mound.

In 1895, I.C.Christlieb resurveyed the Township of Collins and set an iron monument at this corner.

This corner has been destroyed by construction of a ditch.

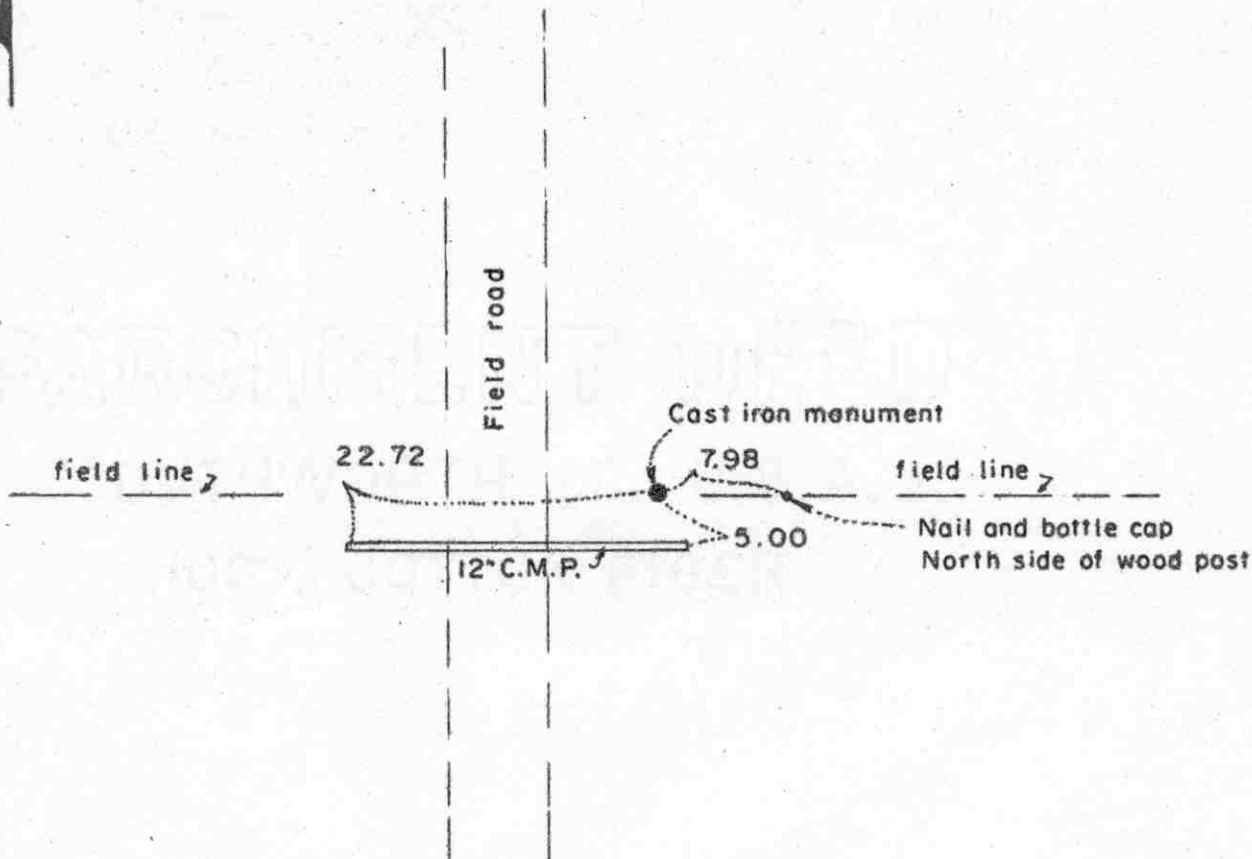
In 1983, we set this corner by double proportionate measure between the southwest corner of Section 7 and the south quarter corner of Section 8 and the west quarter corner of Section 8 and the southwest corner of Section 17. Our distances east-west were about 4 feet longer for each half mile than Christlieb had and north-south about 8 feet longer than Christlieb's distances.

Certificate of Location of Government Corner



SKETCH OF REFERENCE TIES

(NO SCALE)



Statement of evidence relative to this corner location on sheet 2

I hereby certify that this document was prepared by me or under my direct supervision.

Willard Pellinen
Willard Pellinen
McLeod County Surveyor
License No. 9626

Date 1/14/89

OFFICE OF THE COUNTY RECORDER
MCLEOD COUNTY, MINNESOTA.

I hereby certify that this document was filed in this office at 1 o'clock P.M. on the 31st day of Jan., 1989.

Carmen Postlie, County Recorder
By _____, Deputy

Document No. 226726

Certificate of Location of Government Corner

This corner was originally established by Thomas Simpson of the Government Land Office in 1855. He set quarter section post in mound, with trench, pits and charred stake and he planted osage orange seeds on NE and SW corners of mound.

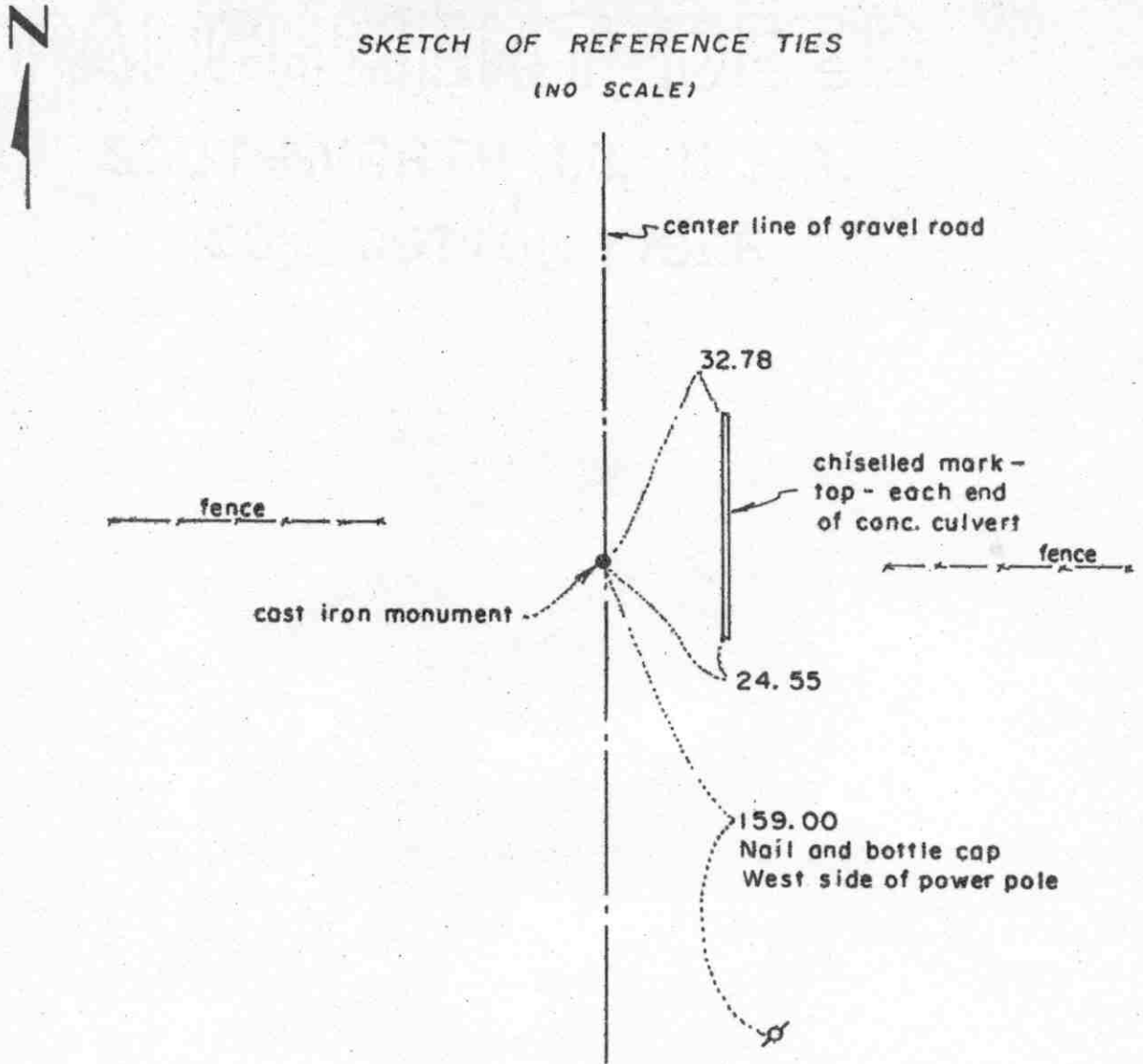
In 1895, I.C.Christlieb resurveyed the Township of Collins and he set an iron monument at this corner.

In October, 1983, we measured the north line of Section 18 and set a temporary corner at the proration of the Government distance between the section corners. We made a thorough search for Christlieb's monument but found nothing. This corner falls very close to a culvert across a field road, so monument was probably destroyed when culvert was set. Our distances to the section corners was about 5 feet longer each way than Christlieb had in 1895, but we find most of his distances 3 to 8 feet shorter for each half mile than our measurements. We checked the occupation lines along the N-S $\frac{1}{4}$ lines of Section 7 and 18 for line. The fence line near center of Section 7 falls approximately 10 feet west of our line. The field line $\frac{1}{4}$ mile south of our corner is about 5 feet west of line and center of ditch $\frac{1}{2}$ mile south is about 3 feet east of our line. A fence running north, $\frac{1}{4}$ mile west is about 13 feet west of the $\frac{1}{16}$ line. We set the quarter corner along the east west field line and the section line also hits a fence line $\frac{1}{4}$ mile west. Christlieb's distances also were on a proration of the government distances.

We feel this corner was an obliterated corner, but has been perpetuated by Christlieb's distances and the field and fence lines running east-west.

Certificate of Location of Government Corner

SKETCH OF REFERENCE TIES
(NO SCALE)



Statement of evidence relative to this corner location on sheet 2

I hereby certify that this document was prepared by me or under my direct supervision.

Willard Pellinen
Willard Pellinen
McLeod County Surveyor
License No. 9626
Date 1/5/89

OFFICE OF THE COUNTY RECORDER
MCLEOD COUNTY, MINNESOTA.

I hereby certify that this document was filed in this office at 1 o'clock P.M. on the 31st day of Jan., 1989.

Carmen Costello, County Recorder
By _____, Deputy

Document No. 226727

Certificate of Location of Government Corner

This corner was originally established by John Ryan of the Government Land Office in 1855. He set post, deposited charcoal, dug pits and trench, built mound and planted osage orange seeds at the corners of the mound.

In 1896, I.C.Christlieb resurveyed Collins Township and set a monument at this corner. His map shows a distance of 2689 to the west quarter corner of Section 18 and a distance of 2677 feet to the west quarter corner of Section 7 and 2672 feet from the $W\frac{1}{4}$ corner of Section 18 to the southwest corner of Section 18.

1912 survey notes by Dahlgren show a distance of 2683 feet to the $W\frac{1}{4}$ corner of Section 7, 2658 feet to the $W\frac{1}{4}$ corner of Section 18 and 2658 feet from the $W\frac{1}{4}$ corner of Section 18 to the southwest corner of Sec. 18.

We measured from the found southwest corner of Section 18 to the found $W\frac{1}{4}$ corner of Section 7 and our distance was within 0.2 of a foot of Dahlgren's distance. We dug with a backhoe at Dahlgren's distances and a proration of Christlieb's distances, but found nothing.

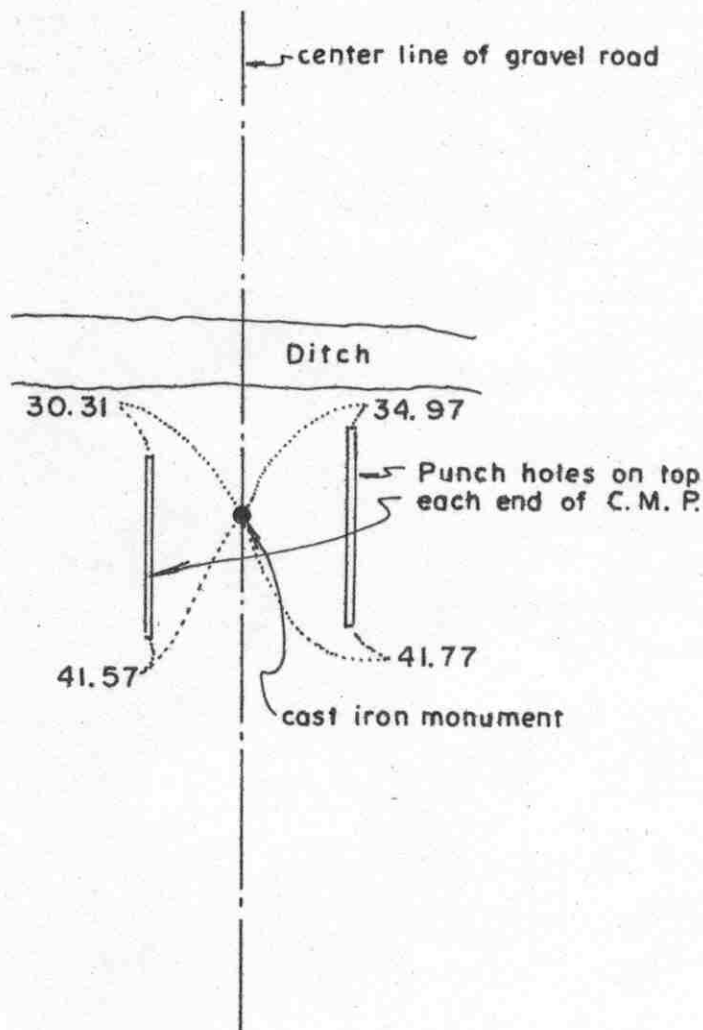
On August 17, 1981, we set a cast iron monument on the center line of the gravel road and at a proration of Dahlgren's 1912 distances.

We feel this is the correct location of the northwest corner of Section 18, as perpetuated by the center line of the road and Dahlgren's distances. This also fits the occupation lines, fences, to the west and east.

Certificate of Location of Government Corner



SKETCH OF REFERENCE TIES
(NO SCALE)



Statement of evidence relative to this corner location on sheet 2

I hereby certify that this document was prepared by me or under my direct supervision.

Willard Pellinen
Willard Pellinen
McLeod County Surveyor
License No. 9626
Date 1/15, 89

OFFICE OF THE COUNTY RECORDER
MCLEOD COUNTY, MINNESOTA.

I hereby certify that this document was filed in this office at 1 o'clock P.M. on the 31st day of Jan., 19 89.

Carmen Ostlie, County Recorder
By _____, Deputy

Document No. 226728

Certificate of Location of Government Corner

This corner was established in 1855 by John Ryan of the Government Land Office. He set the quarter section post in a marsh, deposited charcoal, dug pits and trench and built mound and planted osage orange seeds at the corners of the mound.

In 1895, I.C.Christlieb resurveyed the Township of Collins and set an iron monument at this corner.

In 1912 Dahlgren surveyed in Section 13, Township 115, Range 31, and he had distances along the west line of Section 18 and Section 7.

In July, 1981, we measured the west line of Sections 7 and 18, and dug for this corner at the proration of Christlieb's and Dahlgren's distances, but found nothing.

On August 17, 1981, we set a McLeod County cast iron monument on the center line of the gravel road on a proration of the 1912 distances by Dahlgren. Our measured distance from the found West Quarter corner of Section 7 to the found southwest corner of Section 18 was within 0.2 foot of Dahlgren distance.

We feel this corner was an obliterated corner whose location has been perpetuated by the center line of the road and distances by Dahlgren in 1912.